

From: [Pat Race](#)
To: [Commission, Boundary \(CED sponsored\)](#)
Subject: Public Comment on Xunaa Borough Proposal
Date: Wednesday, February 14, 2024 3:04:23 PM
Attachments: [image.png](#)

You don't often get email from pat@lrcd.com. [Learn why this is important](#)

CAUTION: This email originated from outside the State of Alaska mail system. Do not click links or open attachments unless you recognize the sender and know the content is safe.

To the members of the Local Boundary Commission,

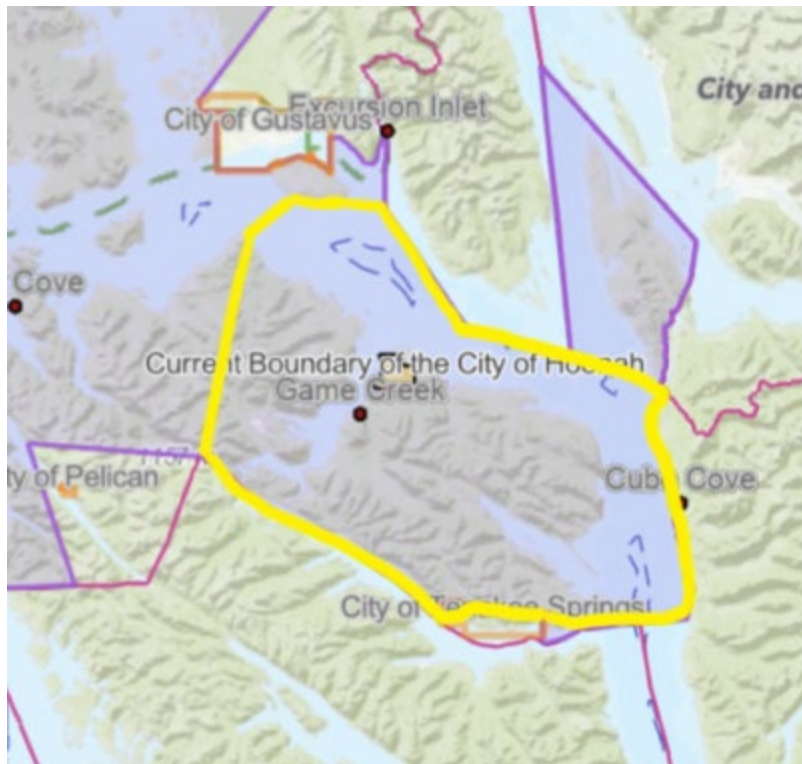
I'm writing in opposition to the proposed boundaries for the Xunaa Borough. The area proposed seems overly expansive and I don't see how the more remote residents will be provided services or benefits from taxation by the borough government.

I'm not opposed to taxation in general. I recognize it's an important revenue component that funds government services... But I do think taxes and the services they pay for ought to benefit the taxpayer. I just don't see how that can happen here with such a distant beneficiary.

In their petition, Hoonah portrays itself as a "regional hub" but that has not been my personal experience over the past 46 years spending time at our family cabin in Idaho Inlet and the surrounding area of Gull Cove, Inian Pass, and Elfin Cove. The ferries, planes and services for these areas primarily arrive from Juneau and occasionally from Gustavus or Pelican.

Hoonah has seen a huge uptick in tourism in Icy Strait Point and they are likely looking for ways to capture a greater share of that revenue to offset impacts to the community. That makes sense. I live in a city deeply impacted by tourism and creating a revenue stream to manage those needs is important. But I think this proposal reaches a bit too far and draws in Alaskans who will not benefit from an additional layer of local government so far removed.

Can the area in the proposal be altered to be smaller? Perhaps ending at Pt. Adolphus in the West side?



If the LBC is interested in having a separate discussion about how unincorporated boroughs can contribute to the State of Alaska, I think that's a good topic. The state provides services all Alaskans rely on and benefit from, even in remote areas.

Thanks for your consideration,
Pat Race